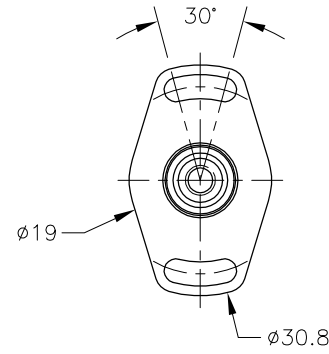


2 OFF 3.2 SLOTS ±15° ON 25.0 PCD. (SYMMETRICAL)



**ELECTRICAL OPTIONS/ SPECIFICATIONS**

**OUTPUT SUPPLY**

0.5 TO 4.5V RATIOMETRIC 5V  
 SUPPLY CURRENT 12mA TYP. 20mA MAX.

CABLE: 0.2mm<sup>2</sup>, O/A SCREEN, PUR JACKET – SUPPLIED WITH 50cm OR REQUIRED LENGTH IN cm (15000cm MAX).  
 STANDARD 3–CORE: JACKET Ø4mm BLACK e.g. 'L50'  
 OPTIONAL 5–CORE: JACKET Ø4.6mm BLUE e.g. 'LQ50'

CABLE/CONNECTOR\* CONNECTIONS;

3 CORE	5 CORE	CONNECTOR	
RED	RED	:1	+Ve
–	ORG	:1	+SENSE (5–WIRE ONLY)
BLACK	BLACK	:3	0V
–	GRY	:3	–SENSE (5–WIRE ONLY)
WHITE	WHITE	:2	OUTPUT
SCREEN	SCREEN	:4	BODY

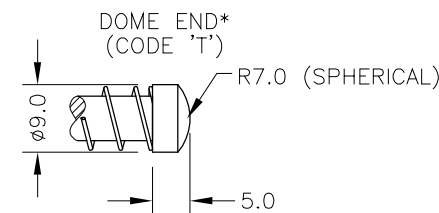
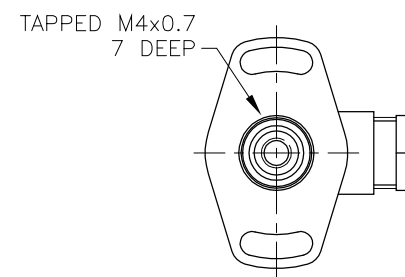
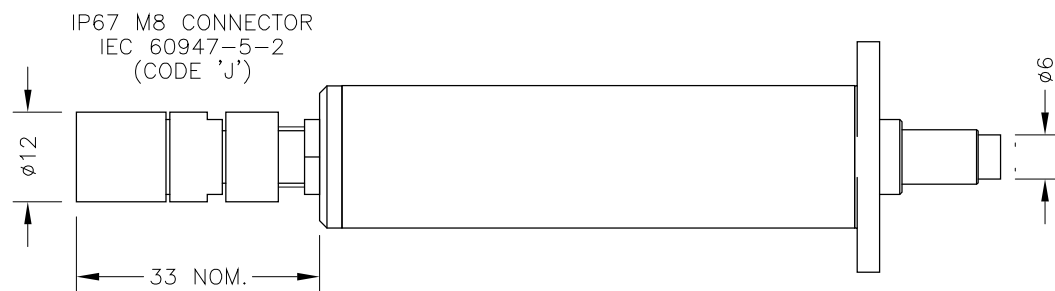
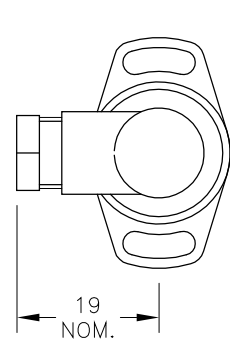
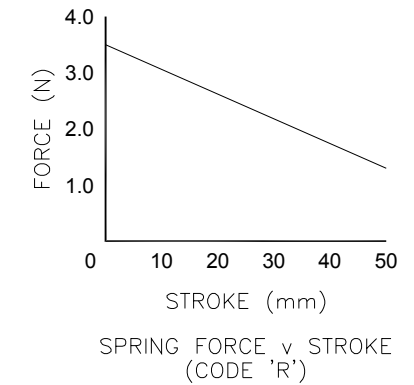
\*CONNECTORS; MAXIMUM CONDUCTOR CROSS SECTION 0.25mm<sup>2</sup>  
 RANGE OF DISPLACEMENT FROM 0–2mm TO 0–50mm e.g.36, IN INCREMENTS OF 1mm.

BODY MATERIAL:– STAINLESS STEEL.  
 FLANGE BASE MATERIAL:– STAINLESS STEEL

FURTHER OPTIONS:

- SINGLE PAIR OF BODY CLAMPS (CODE 'P')
- SPRUNG PLUNGER, TO EXTENDED POSITION (CODE 'R')
- DOME END (CODE 'T') IN CONJUNCTION WITH SPRUNG PLUNGER (CODE 'R')\*
- PLUNGER FREE (CODE 'V')

N.b. NOT AVAILABLE WITH SPRUNG OPTIONS.



NOTE: SENSORS WITH TRAVEL UP TO 50mm ARE MADE IN STANDARD LENGTHS.

TRAVEL: (mm)	BODY LENGTH: (mm)
0–2 TO 0–10	78.0
0–11 TO 0–20	88.0
0–21 TO 0–30	98.0
0–31 TO 0–50	118.0

NOTE:– READ INSTALLATION SHEET E118–19 FOR FULL INSTRUCTIONS FOR USE.

**ATEX / IECEx APPROVED TO**  
 II 1GD  
 Ex ia IIC T4 Ga (Ta= –40° to +80°C)  
 Ex ia IIIC T135°C Da (Ta= –40° to +80°C)  
 Ui 11.4V, Ii 0.2A, Pi 0.51W

APPROVED FOR USE IN CONJUNCTION WITH A GALVANICALLY ISOLATED BARRIER.

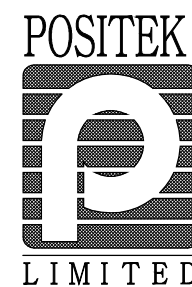
NOTE: APPROVAL ONLY APPLIES AT NORMAL ATMOSPHERIC PRESSURE!

A	FIRST ISSUE	PDM
B	APPROVAL STANDARDS UPDATED - RAN465.	PDM
C	STROKE 2-10 WAS 10 - RAN1063, OPTION 'J' ADDED - RAN1068.	PDM
D	5-CORE OPTION ADDED ~ RAN1102	PDM
E	RANGE NOTE AMENDED ~ RAN1200	PDM



THE PLUNGER RETRACTS 8mm FROM START OF CALIBRATED TRAVEL (2mm FOR SPRUNG VERSIONS) AND EXTENDS 11mm\* BEYOND END OF MECHANICAL TRAVEL. \*DOES NOT INCLUDE DIFFERENCE BETWEEN CALIBRATED AND MECHANICAL TRAVEL, DIMENSIONS ARE NOMINAL. 'V' CODED PLUNGER WILL DEPART SENSOR BODY.

DRAWINGS NOT TO BE CHANGED WITHOUT REFERENCE TO THE CHANGE PROCEDURE. CHANGES TO PARTS USED IN INTRINSICALLY SAFE PRODUCT MUST BE APPROVED BY THE AUTHORISED PERSON. THIS IS AN UNCONTROLLED PRINT AND WILL NOT BE UPDATED.



A	21/11/13	CHECKED BY RDS	X ±0.4
B	11/03/14		X.X ±0.2
C	25/11/15		X.XX ±0.1
D	26/04/17	DESCRIPTION	
E	06/09/17	E118 INTRINSICALLY SAFE SHORT STROKE SLIM-LINE LINEAR POSITION SENSOR	
SCALE 10mm		DRAWING NUMBER E118-11	REV E
		SHEET 1 OF 1	